

A modern, multi-story building with a prominent glass-enclosed balcony. A person is visible on the balcony. The building features a mix of brick and white panels. To the right, there are green trees and a white car parked on a street. The sky is clear and blue.

THE COMPANY PROFILE

www.wepani.com



Wepani

Property Development & Mining



By the blessings of almighty and the support of our valuable and esteemed clients (new and repeat business deals), our staff personnel and stakeholders we are striving to grow and to expand our areas of operations, mostly direct and also through our strong network into African countries.

We service our clients in a cost-effective, timely and highly confidential manner with no compromise to the quality of candidate and no short-cuts to our intense and detailed search and negotiation process.

You will find us an organization of unsurpassed intelligence and talent. We have found that practicality together with innovation always has a higher rate of success - and is a key driver of growth. I proudly say that at Wepani, our clients are serviced with smile, best of innovative skills, transparency, smart negotiation skills, honesty, hard work, dedication and most importantly - best possible inventory at the best possible price (true value for money).

WELCOME

Dula Magide

CEO

At Wepani, we know that the trust and integrity of a firm is the major priority while you are in process of short-listing an investment or realty firm for your company's real estate requirement. Please know that we are committed to you as a "new repeat client" and that there is nothing more important to us than your utmost satisfaction.

All members of Wepani Lda believe in building a relationship which is long-term and that is only possible, when we satisfy you with our efficient services.

I would like to request you to give us an opportunity to serve you and your esteemed organization and I promise you that our services will be truly professional, impeccable, satisfying, fruitful and unmatched.

Dula Magide

CEO



PAGE OF

CONTENT

- 04** ABOUT US
- 05** BUSINESS FOCUS
- 06** WEPANI VALUE ADD
- 07** INVESTMENT PORTFOLIO
- 07** DETAILED PORTFOLIO
- 08** CURRENT PROJECT
- 12** LEADERSHIP
- 14** CORPORATE SOCIAL RESPONSIBILITY



ABOUT US

Our Company

Our leadership group espouses a commitment to economic development, breaking new ground and transformation. We are pioneered and steered by an experienced management group with more than 30 years' combined experience in shaping successful business models and concepts across Southern African Communities, delivering real value and measurable growth.



Our team of seasoned corporate professionals is recognised for its leadership and community roles throughout South Africa and a number of divergent sectors across Africa.

Our focus is on building sustainable growth through responsible investments and a commitment to the communities we work with and support.

Our market niche is driven through systematic property identification and mining right acquisition for development and investment portfolio expansion.

Our Mission

Wepani is a property development and mining investment company focused on delivering significant shareholder value while contributing to the transformation for economic growth, skills development, job creation and social cohesion.

Our Values



Knowledge is power.

Sharing a strong ethical culture and expanding through positive involvement increases our collective chance of success.



Integrity breeds success.

Honesty and transparency in everything we do is the cornerstone of our work.



Growth is life.

We drive business growth through new approaches and a commitment to protect the ones we serve.



Good Corporate Citizenry.

We believe and espouse the notion that human capital is one of our greatest and valuable assets that cannot be easily replaced. Wepani strives to invest in the development and enhancement of skills, knowledge and capacity of its human capital and surrounding communities in order to benefit its sustainability.

BUSINESS FOCUS

Wepani Limited is an exciting and pioneering company set to play a significant role within the property development industry in Africa. At Wepani we focus on investing in diverse business segments, with composite skills in each of the areas we invest. Thus, ensuring a balanced approach to creating value, mitigating risk and delivering sustainable returns to our partners and stakeholders.

Success not shared cannot be sustained.

We do not only settle for outstanding shareholder returns and exceptional growth, but continually strive to give back to our communities so that, one day, they'll be empowered to grow what we started.

WEPANI

VALUE ADD

Complementary combination of skills and experience to support the investee: -

- Solid strategic support to management with regular interactions
- Breadth and Depth of financial and risk management expertise
- Industry experience across multiple sectors
- Legal, corporate governance and transaction structuring expertise.



Business development: -

- Leveraging our strong networks to support Corporate and Governments in South Africa as well as the rest of the African continent
- Our board and governance experience allow us to leverage our networks.

Support economic development and Transformation of the economic landscape: -

- We work holistically with the investor company to assist in all aspects of transformation and Corporate Social Investment (CSI)
- Wepani's strong BEE credentials enhances the BEE status of stakeholders and partners.

Access to funding both equity and debt markets.

INVESTMENT PORTFOLIO

We focus on the following sectors: -

- Property Development
- Mining Investment

DETAILED PORTFOLIO



Property Development

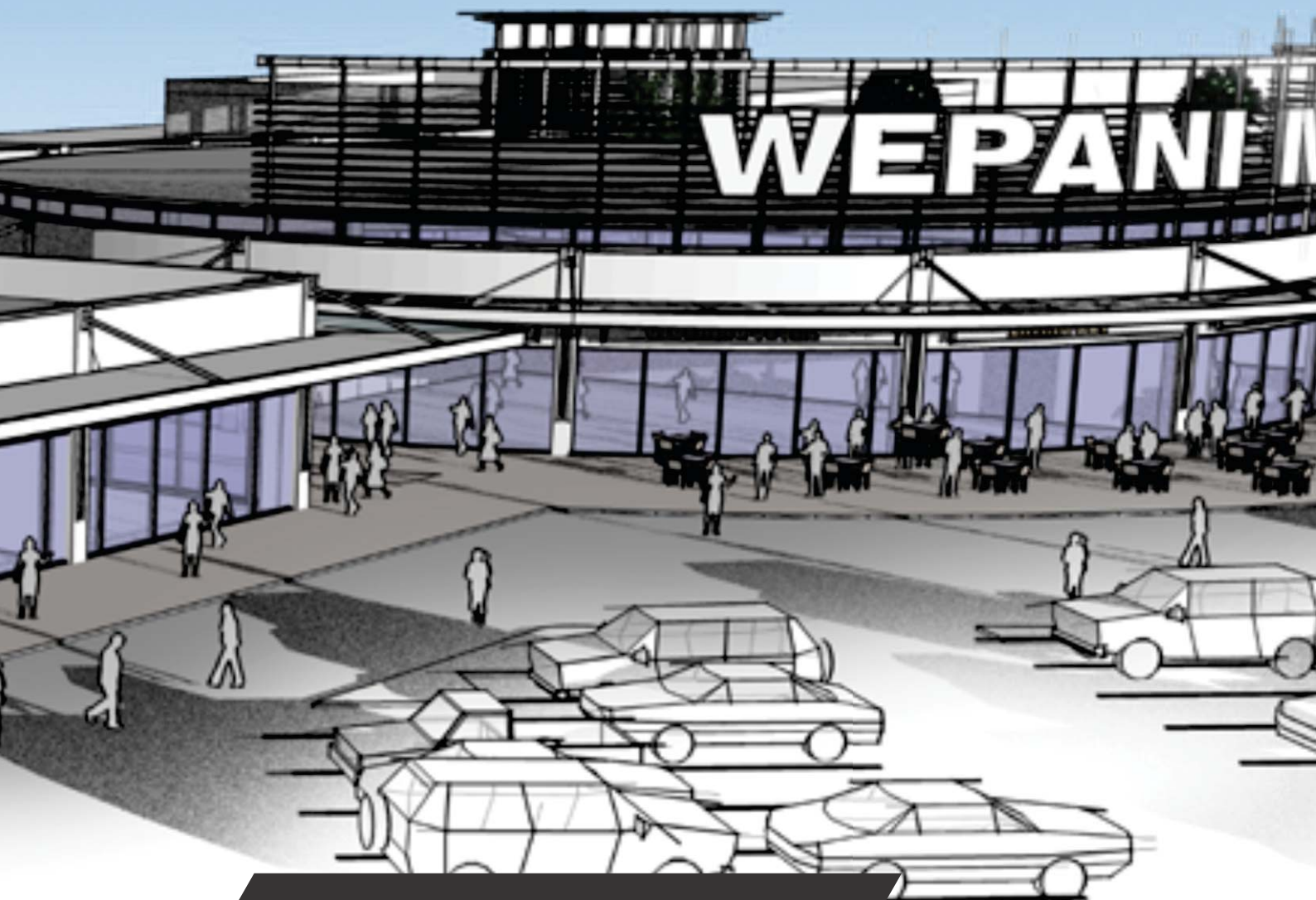
Our special focus is on commercial, leisure and residential property development and management. Sustainability is key to our property development and management ethos and as such, it is an integral part of the day-to-day management of all our projects. Our application is based on the detailed understanding of property development and management developed by our strategic partners who possess immense knowledge and experience over the years. Our interest is providing solutions within the SADAC regions and environment stewardship through integrating green technology in all our developments, to contribute on the reduction of green gas emissions and the negative impact of climate change and global warming.



Mining Investment

We focus on sustainable mining ventures with a view to become one of the best and successful Industrialists and to provide employment opportunities for local communities. We achieve this through empowerment joint ventures, acquisitions and partnerships with credible strategic partners.

We are striving to grow in the pursuant of such mining opportunities, our interests are in coal, iron ore, chrome and gold.



CURRENT PROJECT

**WEPANI MIXED USED DEVELOPMENT
(NAMPULA CITY-MOZAMBIQUE)**

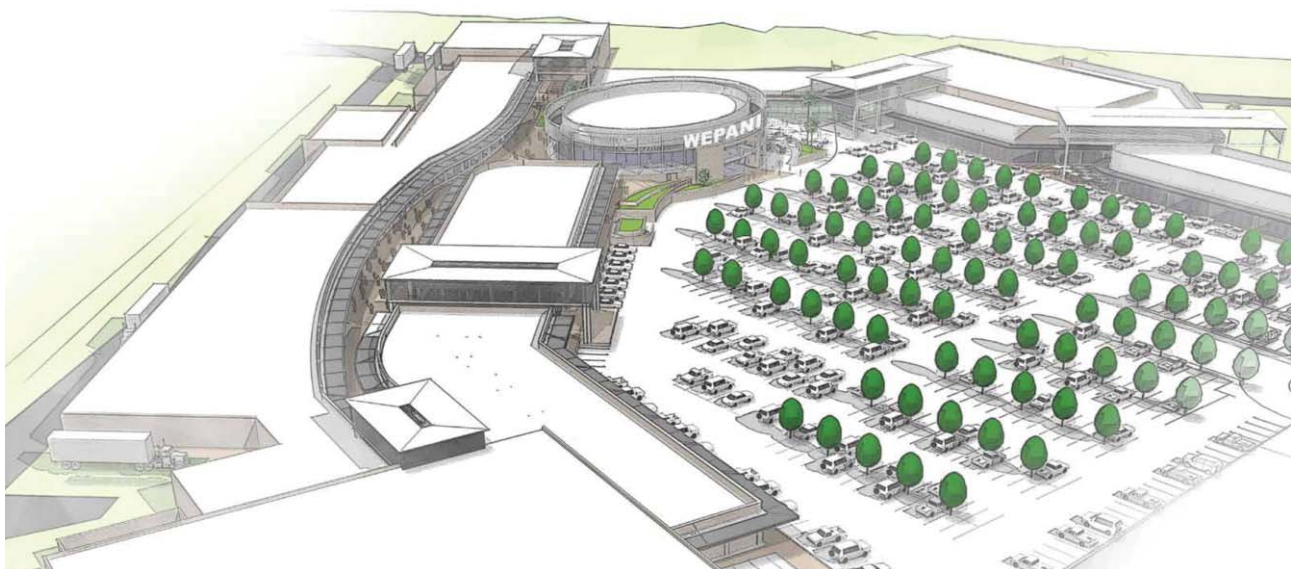
Wepani Limited has identified opportunities to develop a Mixed-Use Development in Nampula Mozambique. The Wepani Village Mixed Use Development Project earmarked for Nampula City in the Nampula province is a much needed and very exciting development. This future orientated city development and Spatial Planning will not only greatly aesthetically enhance the city of Nampula, but will hugely benefit the bulk services in the immediate area. Wepani Limited intends to create and meet the demand for a modern residential and commercial life style mixed development, driven by the many industrial opportunities identified being oil, gas, mining, health and leisure.

The Wepani Village Mixed Development will comprise of the following: -

- Shopping Mall
- Multilevel luxury apartments
- Standalone residential stands
- Student Accommodation
- Office park
- Entertainment area
- Private hospital 160 Beds
- Sheraton Hotel 185 Rooms

The Wepani Mixed Use Development is a project situated on the edge of Nampula City. The project is located on 27 hectares in Nampula City. Nampula City is the Capital City of the Nampula Province which has a population of over 800 000 people and is growing. Nampula City is situated in the Center of the Nampula Province and is surrounded by plains and rocky granite outcrops. The Wepani Mixed Used Development project has been selectively located in the Nampula City due to the developmental niche, influx of investors, mining activities, agricultural industry, energy, liquid and natural gas availability.

This project has the potential to attract other new developments around the area due to its strategic geographic location in the Eastern Coast of the Indian Ocean and entry to and for the ECOWAS Region. During and post construction, thousands of jobs will be created for the local communities and neighbouring SADAC countries due the nature and scope of the project.





WEPANI LEISURE PROPERTIES

Waterfront International Resort, for the development of an investment project, including Tourist and Hotel facilities, with the probability of becoming an international tourist destination, located north of Nacala a Velha, along the beach in the province of Nampula.

The property is part of Nacala a Velha urban development (or plan), with a privileged urbanistic integration (or framework) since it has a beachfront directly facing at a pristine white sand beach and wild native vegetation. The propriety is situated in the neighbourhood of the new Nacala International Airport, north wise with the famous Islands that form part of the Quirimbas Archipelago in the province of Cabo Delgado and measures 100ha.

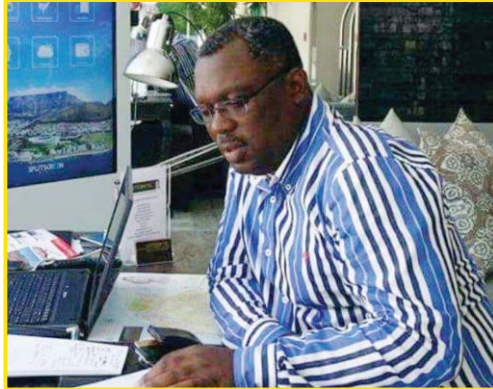


MINING

Wepani has over the years in its infancy exploited opportunities to acquire mineral rights in various locations in Mozambique with the aim to enter into partnership to develop the mineral rights. Our Mining portfolio includes the following minerals: -

- Gold
- Lime
- Graphite
- Granite
- Tourmaline & Rubi
- Diamonds*
- Fuels*
- Sapphire
- Rare earth Minerals
- Gemstones

LEADERSHIP



Dula Magide
(CEO/ Shareholder)

Founder and Major Shareholder, holds a Master Degree in Business Studies from Cornell University, USA.

He is the driving force for the implementation of both Wepani Property Development and Mining Tenements.

His Vision, Managerial, Leadership, Entrepreneurial wisdom and Inspiration, helps put in motion our dreams towards achieving successful end results.

He played several Senior Management Roles in Multinational Corporations in The Telecommunication and The Beverage Industries after 25 years of Managerial experience serving CAJU DE MOCAMBIQUE, LDA -The Cashew Nut Company in Mozambique with 25 factories across the country.



Geoffrey Freeman
(COO/ Shareholder)

Has a Bachelor of Science Business Administration from the University of Richmond Virginia USA, and an Advanced Project Management Programme from University of South Africa- UNISA Graduate School of Business.

Geoffrey Freeman as COO is part of the dynamic Wepani Lda team and leads by example he imparts his vision, invokes and implements the Wepani Lda Mission Statement and the company's stated values and has the proven attributes, ability, skills set and passion to ensure that Wepani Lda becomes a major property developer in Mozambique and on the continent of Africa.

He has been active in the corporate space in the USA in the capacity of Senior Management.

He has a wealth of experience (33 years) in Executive Management, Business Management, Finance Management, Sales and Marketing Strategies and Project Management. A proven successful track record as it pertains to large Housing Developments in the form of Social and Affordable Housing, added to this is his vast experience and exposure to the likes of the successful development of small to medium size Shopping Centres, Mixed Developments and Residential Developments, this in the capacity as CEO and owner of the development company.



Calvin Phiri
(Project Manager)

Calvin Phiri has over 29 years development and Infrastructure management experience. He holds a Project Management Diploma from the University Of Witwatersrand Business School (PDNM), Community Development certificates from the former Technikon SA and the Foundation for People Centred Development. Calvin has conceptual skills, development planning, strong interpersonal skills and business management skills. Calvin has facilitated development projects in South Africa, Malawi, Zimbabwe and Swaziland.

His main role in Wepani is Project Management, Business Development and Institutional Development Management. His experience includes but not limited to: -

- Water Infrastructure planning
- General Building Infrastructure
- Waste Management
- Renewable Energy
- Stakeholder Management
- Project Management
- Training and Capacity Building
- Visitor to the University of Potsdam (Germany) for renewable energy and waste management practices
- Business Planning
- Strategic Management





CORPORATE SOCIAL RESPONSIBILITY

We at Wepani are committed to making an impact in the communities in which we work.

The Wepani Lda Mission Statement: -

Wepani Lda endeavours to be the largest property developer in Mozambique with the drive to be a recognised and highly respected developer throughout the continent of Africa.

This vision is in alignment with the strong social commitment and business values that is part of the Wepani Lda ethos.



Memba

Chepa

Fernao Veloso

CHEPA BEACHFRONT
INTERNATIONAL LEISURE RESORT



Wepani Lda

Avenida da Independência
Prédio Banco 1st Floor
Flat 1-Nampula Mozambique
Tel: +27787159813

www.wepani.com | info@wepani.com



Wepani

Property Development & Mining